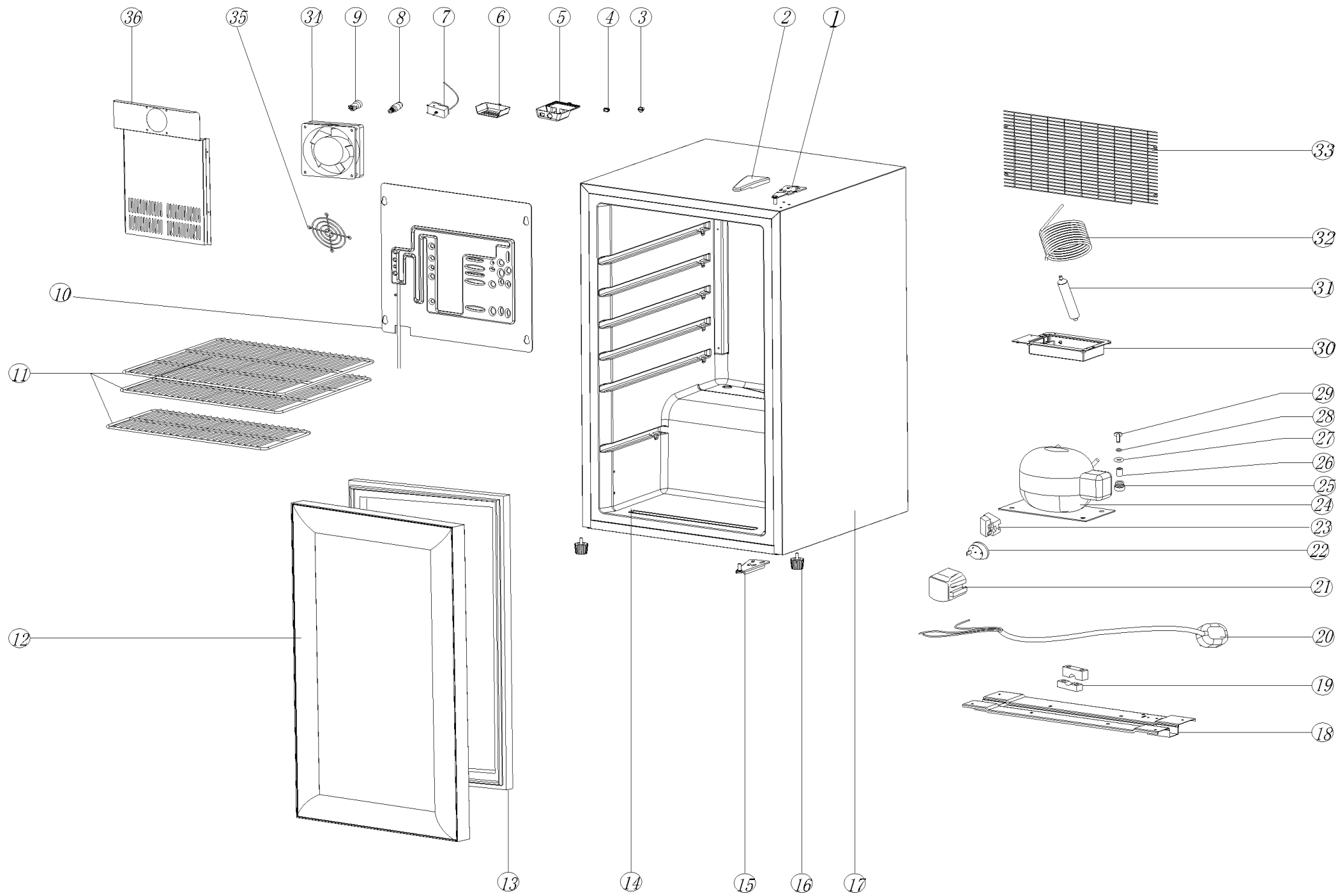


# EXPLOSIONSZEICHNUNG



KBS Gastrotechnik GmbH – Schoßbergstraße 26 – 65201 Wiesbaden



Pos.No.	Part No	Description
1	RES-15928	Top Hinge
2	RES-27618	Hinge cover
3	RES-26945	A knob
4	RES-13451	Switch
5	RES-26946	Thermostat box
6	RES-15936	Thermostat cover
7	RES-15932	Thermostat
8	RES-15930	Light bulb
9	RES-15931	Light mouth
10	RES-26947	Plate evaporator
11	RES-26948	Standard shelf
11.1	RES-26949	Small shelf
12	RES-26950	Glass door
13	RES-26951	Gasket
14	RES-28698	Liner
15	RES-15941	Bottom Hinge
16	RES-26952	Adjustable feet
18	RES-26953	Compressor plate
19	RES-12438	Wire clip
20	RES-26954	Power Cord
21	RES-25594	Terminal cover
22	RES-25595	Over load over heat protector
23	RES-25596	PTC starting
24	RES-25579	Compressor
25	RES-25597	Rubber spacer
26	RES-25598	Compressor sleeve
27	RES-25599	Washer
28	RES-25600	Spring washer
29	RES-25601	Fixing screw
30	RES-15947	Water tray
31	RES-20838	Dry filter
32	RES-25602	Spiral condenser
33	RES-26955	Back Grid
34	RES-28699	Fan
35	RES-28700	Fan cover
36	RES-28701	Evaporator baffle