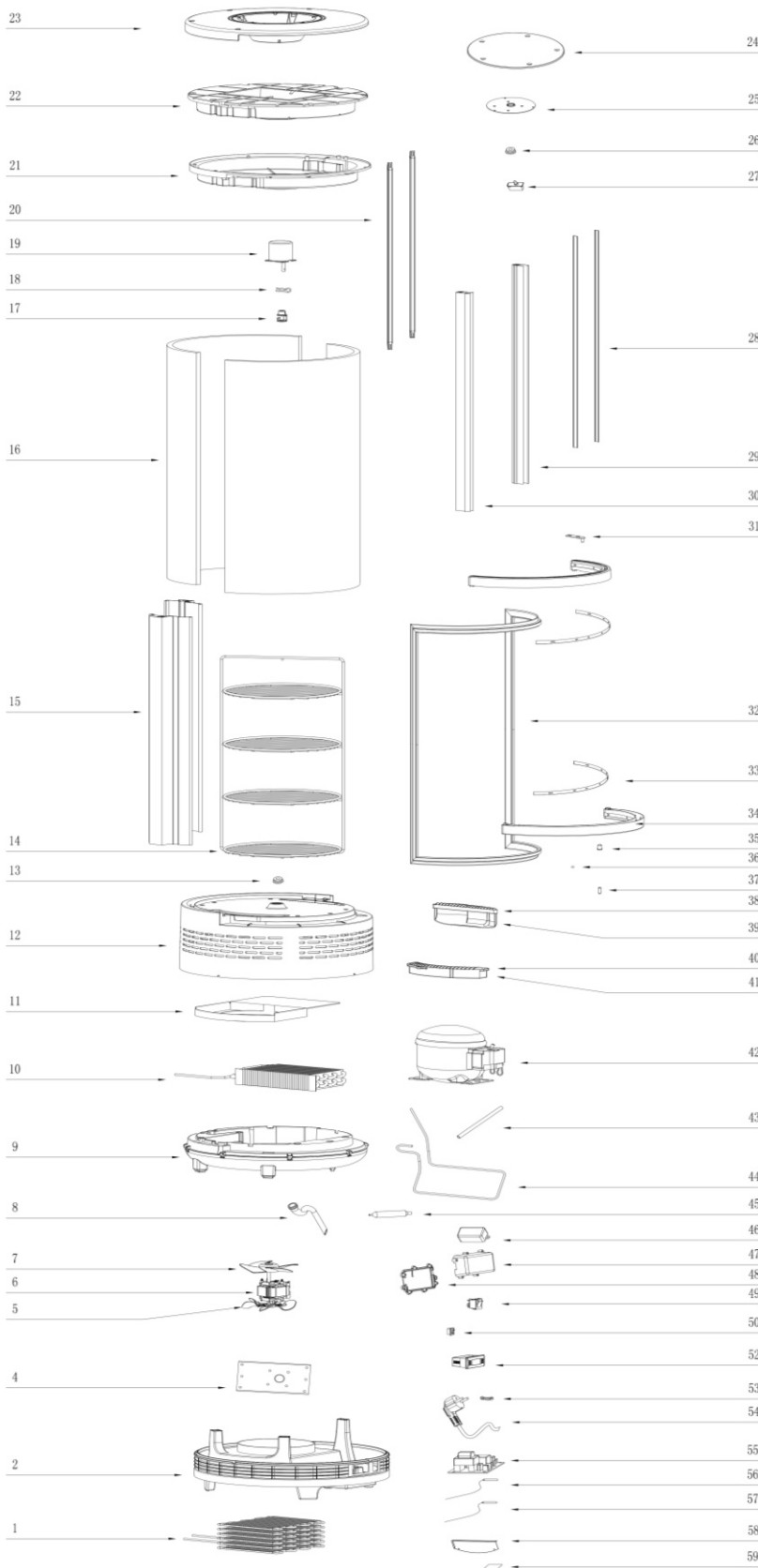


EXPLOSIONSZEICHNUNG



KBS Gastrotechnik GmbH – Schoßbergstraße 26 – 65201 Wiesbaden



59	2.4.1.01.009	Square baffle
58	3.4.4.01.008	Baffle
57	2.3.03.828	Defrost probe
56	2.3.03.803	Temperature probe
55	2.3.03.032	Small main board
54	2.3.01.071	Power cord
53	2.5.0.06.017	Pressing line plate
52	2.3.04.028	Digital controller
50	2.3.06.004	Switch for rotated shelf
49	2.3.06.007	Main switch
48	2.5.0.05.015	Box cover
47	2.5.0.05.008	Circuit board box
46	2.3.07.009	LED Power
45	2.2.6.001	Dry filter
44	2.2.3.400	Copper pipe
43	2.2.3.373	Charging tube
42	2.1.402	Compressor
41	2.5.4.01.058	Lower cover for air-suction
40	2.5.4.01.057	Upper cover for air-suction
39	2.5.4.01.060	Lower cover for air-outlet
38	2.5.4.01.059	Upper cover for air-outlet
37	2.4.0.13.318	Door pin
36	2.4.0.03.9.001	Steel ball
35	2.5.0.20.027A	Bushing
34	2.5.4.01.063	Door frame
33	2.4.4.01.003	Magnetic stripe
32	2.5.0.07.084	Door gasket
31	2.4.0.13.203	Upper gemel
30	2.5.4.01.056	Door handle
29	2.5.4.01.055	Bottom door frame
28	2.4.4.01.004	Side magnetic stripe
27	2.3.06.017	Door switch
26	2.5.0.06.012	Fixed ring for motor
25	2.4.2.04.001	Fixed panel for motor
24	3.4.4.01.011	Small cover
23	2.5.4.01.062	Top cover
22	2.7.01.0088	Top foam
21	2.5.4.01.061	Upper cover
20	2.3.05.2.050	LED Lamp
19	2.3.02.307	Motor for the Rotational rack
18	2.4.0.13.306	Peg
17	2.4.4.01.006	Rack hook
16	3.6.1.05.003	Curved glass pillar
15	2.5.4.01.054	Rotated shelf
14	2.4.0.14.102	Shelf bush
13	2.5.5.16.004	Shelf bush
12	2.5.4.01.051	Bottom panel for air flow
11	2.5.4.01.053	Guard board for evaporator
10	2.2.1.034	Evaporator
9	3.1.4.804	Evaporator holder
8	2.5.0.13.075	Upper/bottom seep tube
7	2.3.02.010	Fan blade of evaporator
6	2.3.02.154	Motor
5	2.3.02.305	Fan blade of condenser
4	3.4.4.01.009	Metal base of fan motor
2	2.5.4.01.049	Bottom base of compressor
1	2.2.2.080	Condenser
No:	Spare parts Code	Des