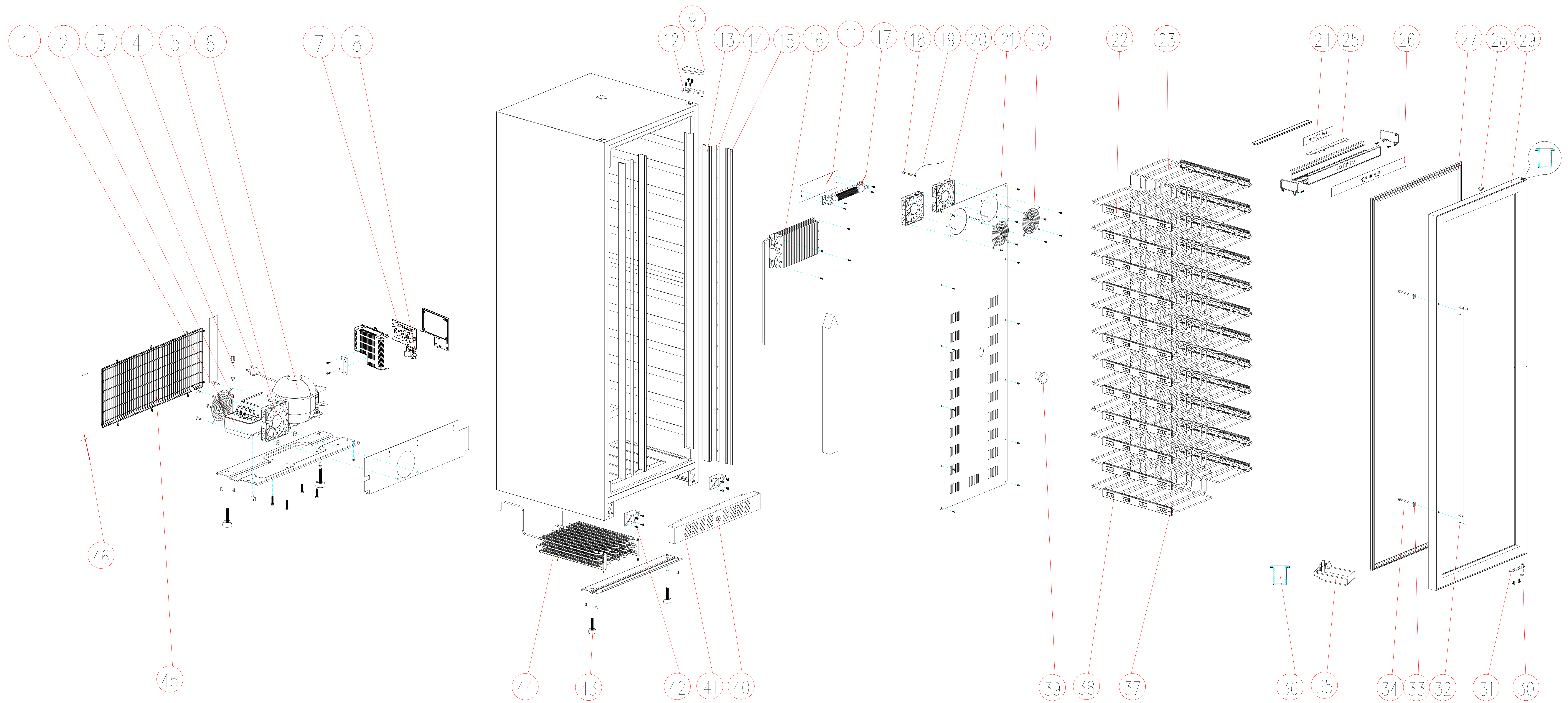


EXPLOSIONSZEICHNUNG



KBS Gastrotechnik GmbH – Schoßbergstraße 26 – 65201 Wiesbaden



N/M	Part NO.	USAGE	Unit	Part Name
1	2011079-2	1,0000	PCS	Compressor Base Board
2	2040136	1,0000	PCS	Condensed Water Evaperating Pipe
3	2040246	1,0000	PCS	Dry Filter
4	2030373	1,0000	PCS	Power Cord
5	2030789	1,0000	PCS	Fan
6	2040184	1,0000	PCS	Compressor
7	2030592-1	1,0000	PCS	Mainboard
8	2030244	1,0000	PCS	Switching Power Supply
9	2020070	1,0000	PCS	Door Hinge cover
10	2010055	2,0000	PCS	Fan Mask
11	2010524+1	1,0000	PCS	PTC Heater Bracket
12	2010154+1	1,0000	PCS	Door Hinge_Upper
13	2020319	2,0000	PCS	Lampshade
14	2030352	4,0000	PCS	Lamp PCB
15	2020275	2,0000	PCS	Side Lamp Seat
16	2040256-3	1,0000	PCS	Evaporator
17	2030123	1,0000	PCS	Heater
18	2020024	3,0000	PCS	Shelf Stopper
19	2030655-1	1,0000	PCS	NTC Sensor
20	2030788	2,0000	PCS	Fan
21	2020278-1	1,0000	PCS	Air Deflector
22	2010579	#####	PCS	Guide Rail
23	2063164-1	#####	PCS	Shelf
24	2030582	1,0000	PCS	Operation Panel PCB
25	2030057	1,0000	PCS	Lamp PCB
26	2064130-8	1,0000	PCS	Operation Panel Sticker
27	2071133	1,0000	PCS	Door Gasket
28	2020154	1,0000	PCS	Lock Hole Cap
29	2071334	1,0000	PCS	Door
30	2020071-2	2,0000	PCS	Lower Door Shaft Spacer
31	2010155+1	1,0000	PCS	Lower Hinge Shaft Subassembly
32	2060381	1,0000	PCS	Handle
33	2010048	4,0000	PCS	Handle Screw Washer
34	2050025	2,0000	PCS	Screw
35	2020583	1,0000	PCS	Door Support Pad
36	2020022+1	1,0000	PCS	Door Shaft Sleeve

Vino 500

37	2063165-1	1,0000	PCS	Shelf
38	2010580	1,0000	PCS	Guide Rail
39	2020046	1,0000	PCS	Charcoal Filter
40	2010130-2	1,0000	PCS	Lock Box
41	2010213-1	1,0000	PCS	Front Louver
42	2010153+1	2,0000	PCS	Door Hinge_Lower
43	2020023	4,0000	PCS	Foot
44	2040198-5	1,0000	PCS	Condenser
45	2010750+1	1,0000	PCS	Compressor rear cover
46	2010165+1	2,0000	PCS	Compressor rear cover plate