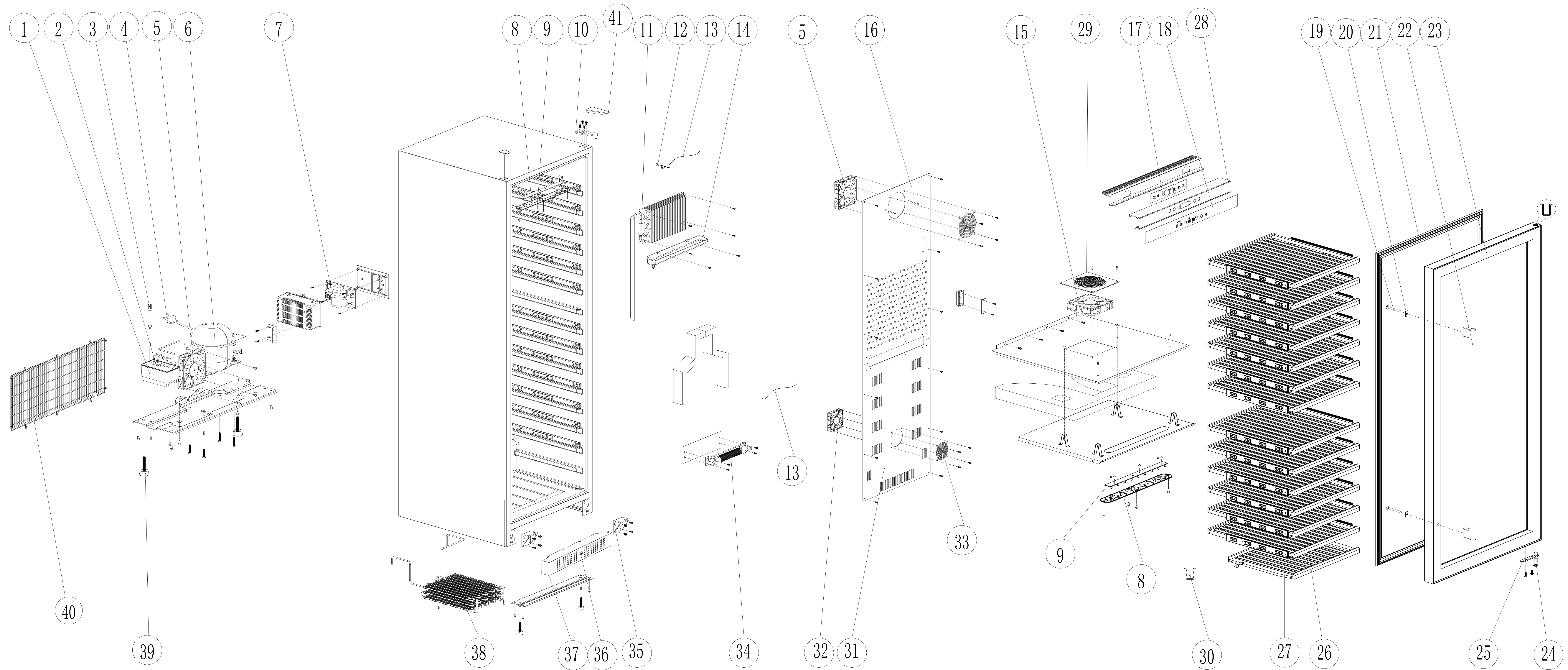


EXPLOSIONSZEICHNUNG



KBS Gastrotechnik GmbH – Schoßbergstraße 26 – 65201 Wiesbaden



N/M	Part No.	USAGE	Unit	Part Name
1	2020019-3	1	PCS	Water Tray_Inner
2	2040136	1	PCS	Condensed Water Evaperating Pipe
3	2040246	1	PCS	Dry Filter
4	2030373-1	1	PCS	Power Cord
5	2030789	1	PCS	Condensor Fan
6	2040184	1	PCS	Compressor
7	2031200-1	1	PCS	Mainboard
8	2020045	2	PCS	Lampshade
9	2030057	2	PCS	Lamp PCB
10	2010154+1	1	PCS	Door Hinge_Upper
11	2040256-5	1	PCS	Evaporator
12	2020024	29	PCS	Shelf Stopper
13	2030644-1	1	PCS	NTC Sensor
14	2020043	1	PCS	Water Tray_Inner
15	2030788	2	PCS	Fan
16	2020061-1	1	PCS	Air Deflector
17	2031707	1	PCS	Operation Panel PCB
18	2063678	1	PCS	Operation Panel Sticker
19	2050025	2	PCS	Screw M4*35
20	2010048	4	PCS	Handle gasket
21	2070127-1	1	PCS	Door Gasket
22	2060381	1	PCS	Handle
23	2071252	1	PCS	Door
24	2020071-2	2	PCS	Lower Door Shaft Spacer
25	2010155+1	1	PCS	Lower Hinge Shaft Subassembly
26	2060295	5	PCS	Shelf
27	2061259	1	PCS	Shelf Stopper
28	2020244-2	1	PCS	Partition Front Bar
29	2020252	1	PCS	Fan Cover
30	2020048+1	1	PCS	Door axis sheath cover
31	2020141-1	1	PCS	Air Deflector
32	2030720	1	PCS	Fan
33	2010056	1	PCS	Fan Guard
34	2030123	1	PCS	Heater
35	2010153+1	2	PCS	Door Hinge_Lower
36	2010130-2	1	PCS	Lock

37	2010098-1	1	PCS	Front Louver
38	2040198-5	1	PCS	Condenser
39	2020023	4	PCS	Foot
40	2010117+2	1	PCS	Compressor rear cover
41	2020182	1	PCS	Door Hinge cover