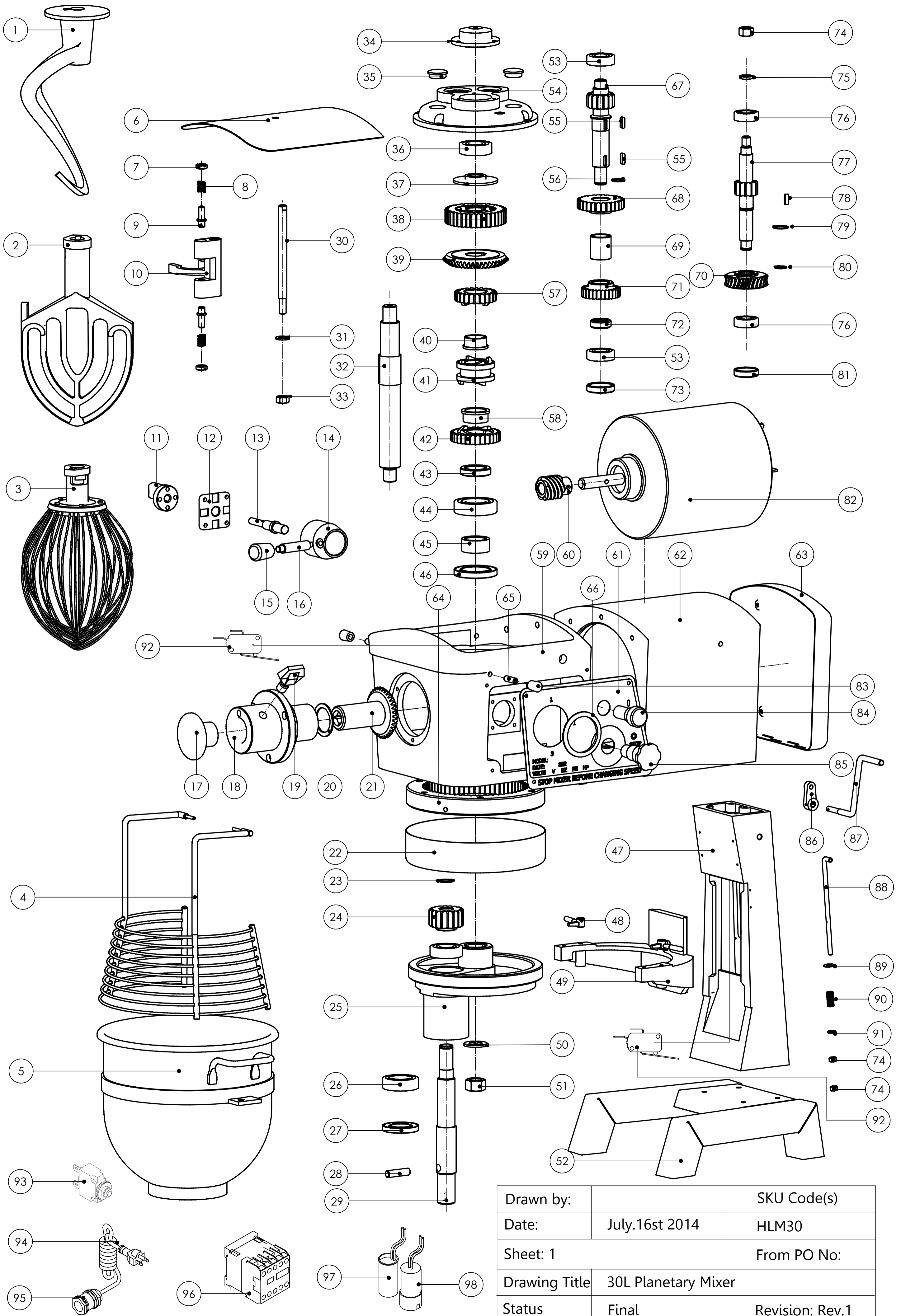


# EXPLOSIONSZEICHNUNG



KBS Gastrotechnik GmbH – Schoßbergstraße 26 – 65201 Wiesbaden



Drawn by:		SKU Code(s)
Date:	July.16st 2014	HLM30
Sheet: 1		From PO No:
Drawing Title	30L Planetary Mixer	
Status	Final	Revision: Rev.1

Ref. No.	Supplier code	Description	Qty	Description
1	30-1	Hook	1	
2	30-2	Beater	1	
3	30-3	Wire Whip	1	
4	30-4	Safety guard	1	
5	30-5	Bowl	1	
6	30-6	Top cover	1	
7	30-7	Screw	2	the same with 20L, 10L
8	30-8	Spring	2	the same with 20L
9	30-9	Pin shaft	1	the same with 20L
10	30-10	Shifting yoke	1	
11	30-11	Cam-gear shifter	1	the same with 20L
12	30-12	Plate-shifter index	1	the same with 20L
13	30-13	Handle-shifter	1	
14	30-14	Handle set	1	
15	30-15	Turnset	1	
16	30-16	Speed handle	1	
17	30-17	Plug attachment hub	1	
18	30-18	Attachment hub	1	
19	30-19	Spring	1	
20	30-20	Circlips	1	
21	30-21	Gear	1	
22	30-22	Hood ring	1	
23	30-23	Circlips for shaft	1	
24	30-24	Planet gear	1	
25	30-25	Operating shelf	1	
26	30-26	Bearing	1	the same with 20L
27	30-27	Oil seal	1	
28	30-28	Pin	1	
29	30-29	Working shaft	1	
30	30-30	Declutch shift shaft	1	
31	30-31	Plate	1	
32	30-32	Main shaft	1	
33	30-33	Nut	1	
34	30-34	Top batter valve cap	1	
35	30-35	Flat valve cap	2	the same with 20L
36	30-36	Bearing	1	the same with 20L, 10L
37	30-37	Spacer-lower	1	
38	30-38	Super machine parts	1	
38-1	30-38-1	Super machine parts	1	

38-2	30-38-2	Gear	1	
38-3	30-38-3	Roller	1	
38-4	30-38-4	Spring	1	
39	30-39	Gear	1	
40	30-40	Bushing	1	the same with 20L
41	30-41	Sleeve	1	
42	30-42	Gear	1	
43	30-43	Clamp plate	1	
44	30-44	Bearing	1	
45	30-45	Bushing	1	
46	30-46	Oil seal	1	
47	30-47	Body housing	1	
48	30-48	Bowl hold kits	2	
49	30-49	Support	1	
50	30-50	Clamp plate	1	
51	30-51	Nut	1	
52	30-52	Base	1	
53	30-53	Bearing	1	the same with 20L
54	30-54	Transmission shaft support	1	
55	30-55	Key	2	
56	30-56	Circlips for shaft	1	
57	30-57	Gear	1	
58	30-58	Bushing	1	the same with 20L
59	30-59	Front housing	1	
60	30-60	Worm wheel	1	
61	30-61	MARK	1	
62	30-62	Case	1	
63	30-63	Back cover	1	
64	30-64	Internal gear	1	
65	30-65	Screw	4	
66	30-66	Seal up ring	1	
67	30-67	Gear shaft	1	
68	30-68	Gear	1	
69	30-69	Bushing	1	
70	30-70	Gear	1	
71	30-71	Gear	1	
72	30-72	Plate	1	
73	30-73	Plug 1	1	
74	30-74	Nut	3	
75	30-75	Spring plate	1	
76	30-76	Bearing	2	the same with 10L
77	30-77	Shaft worm gear	1	
78	30-78	Key	1	
79	30-79	Circlips for shaft	1	

80	30-80	Circlips for shaft	1
81	30-81	Plug 2	1
82	30-82	110V/50HZ Motor(with tool)	1
83	30-83	Rubber set	4
84	30-84	Green button	1
85	30-85	Red button	1
86	30-86	Crank lever	1
87	30-87	Handle-shifter	1
88	30-88	Connecting rod	1
89	30-89	Spring	1
90	30-90	Spring plate	1
91	30-91	Clamp plate	1
92	30-92	Distance switch	1
93	93	overload switch	1
94	94	Power cord	1
95	95	Power supply is waterproof connectors	1
96	96	Contact switch	1
97	97	Capacitor	1
98	98	Capacitor	1

the same with 20L

the same with 20L