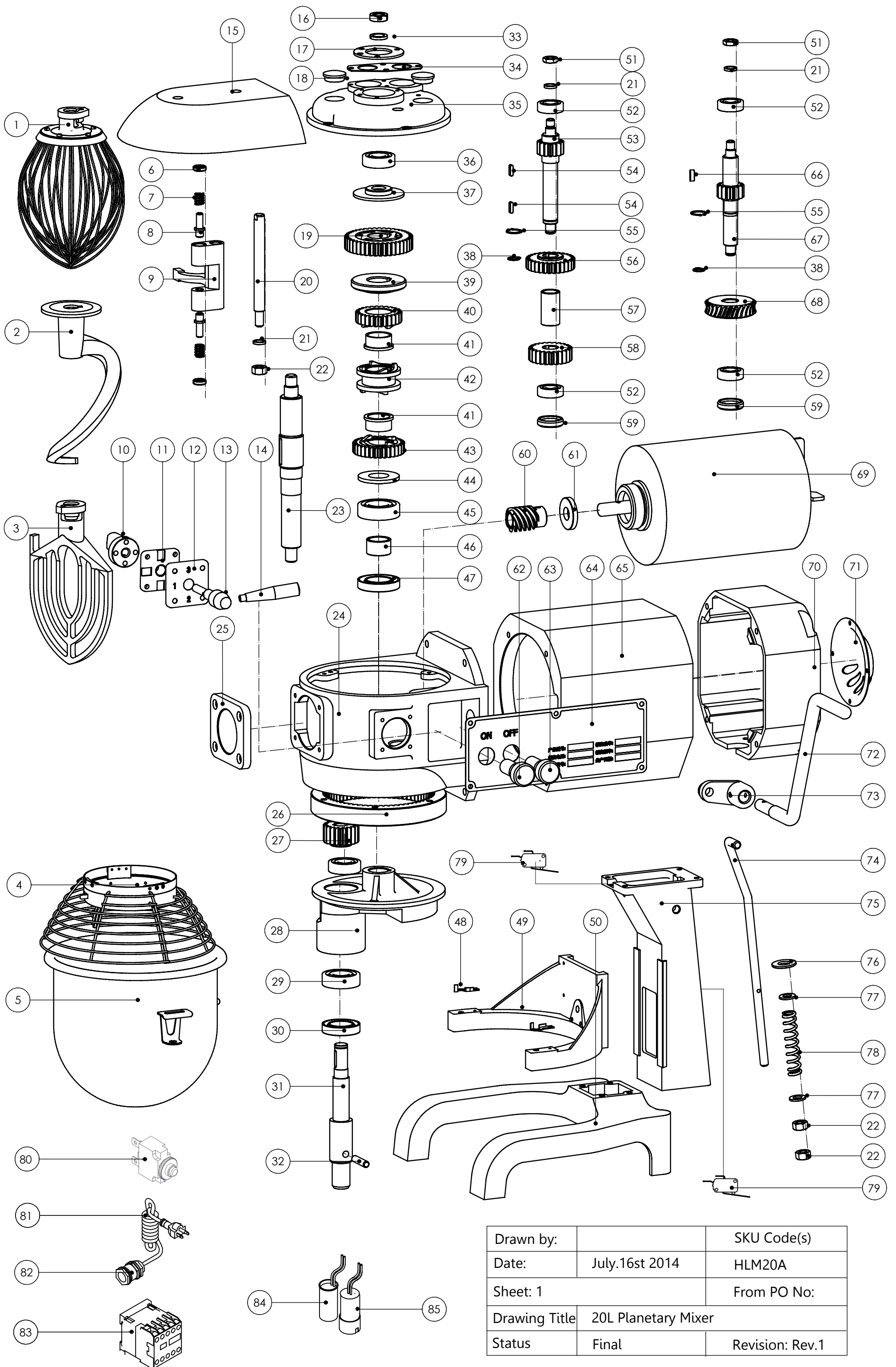


EXPLOSIONSZEICHNUNG



KBS Gastrotechnik GmbH – Schoßbergstraße 26 – 65201 Wiesbaden



Drawn by:		SKU Code(s)
Date:	July.16st 2014	HLM20A
Sheet: 1		From PO No:
Drawing Title	20L Planetary Mixer	
Status	Final	Revision: Rev.1

Ref. No.	Supplier code	Description	Qty	Description
1	20-1	Wire whip	1	
2	20-2	Spiral dough hook	1	
3	20-3	Flat Beater	1	
4	20-4	Safety guard	1	
5	20-5	Bowl assembly	1	
6	30-7	Plunger-shifter yoke	2	the same with 30L, 10L
7	30-8	Spring	2	the same with
8	30-9	Pin shaft	2	the same with
9	20-9	Shifting yoke	1	
10	30-11	Cam-gear shifter	1	the same with
11	30-12	Plate-shifter index	1	the same with
12	20-12	Handle-shifter cover	1	
13	20-13	Handle-shifter	1	
14	20-14	Speed handle	1	
15	20-15	Gear case gland	1	
16	20-16	Nut	1	
17	20-17	Pressing plate	1	
18	30-35	Plug cover	2	the same with
19	20-19	Super machine parts	1	
20	20-20	Declutch shift shaft	1	
21	20-21	Ring	3	
22	20-22	Nut	3	
23	20-23	Main shaft	1	
24	20-24	Gear box	1	
25	20-25	End cap	1	
26	20-26	Internal gear	1	
27	20-27	Gear	1	
28	20-28	Operating shalf	1	
29	30-36	Bearing	1	the same with 10L, 30L
30	20-30	Oil seal	1	
31	20-31	Working shaft	1	
32	20-32	Retainer-pin	1	
33	20-33	Spring	1	
34	20-34	Pressing plate	1	
35	20-35	Transmission shaft support	1	
36	30-53	Bearing	2	the same with
37	20-37	Spacer-lower	1	
38	20-38	Circlips for shaft	2	
39	20-39	Ring gasket	1	

40	20-40	Gear	1
41	30-40	Bushing	2
42	20-42	Sleeve	1
43	20-43	Claw type gear wheel	1
44	20-44	Ring	1
45	30-26	Bearing	1
46	20-46	Bushing	1
47	20-47	Oil seal	1
48	20-48	Fore lump	2
49	20-49	Support	1
50	20-50	Case	1
51	20-51	Nut	2
52	20-52	Bearing	4
53	20-53	Mid-gear wheel	1
54	20-54	Key	2
55	20-55	Circlips for shaft	2
56	20-56	Gear	1
57	20-57	Bushing	1
58	20-58	Gear	1
59	20-59	Plug cover	2
60	20-60	Worm wheel	1
61	20-61	Oil seal	1
62	30-84	Green button	1
63	20-63	Red button	1
64	20-64	Brand	1
65	20-65	Motor box	1
66	20-66	Key	1
67	20-67	Shaft worm gear	1
68	20-68	Gear	1
69	20-69	110V/50HZ Motor(with tool)	1
70	20-70	Back housing	1
71	20-71	Back Cover	1
72	20-72	Handle-shifter	1
73	20-73	Crank lever	1
74	20-74	Connecting rod	1
75	20-75	Stud	1
76	20-76	Clamp plate	1
77	20-77	Clamp plate	2
78	20-78	Spring	1
79	30-92	Distance switch	1
80	20-80	Overload switch	1
81	20-81	Power cord	1
82	20-82	Power supply is waterproof connectors	1

the same with

the same with

the same with

the same with

83	20-83	Contact switch	1
84	20-84	Capacitor	1
85	20-85	Capacitor	1