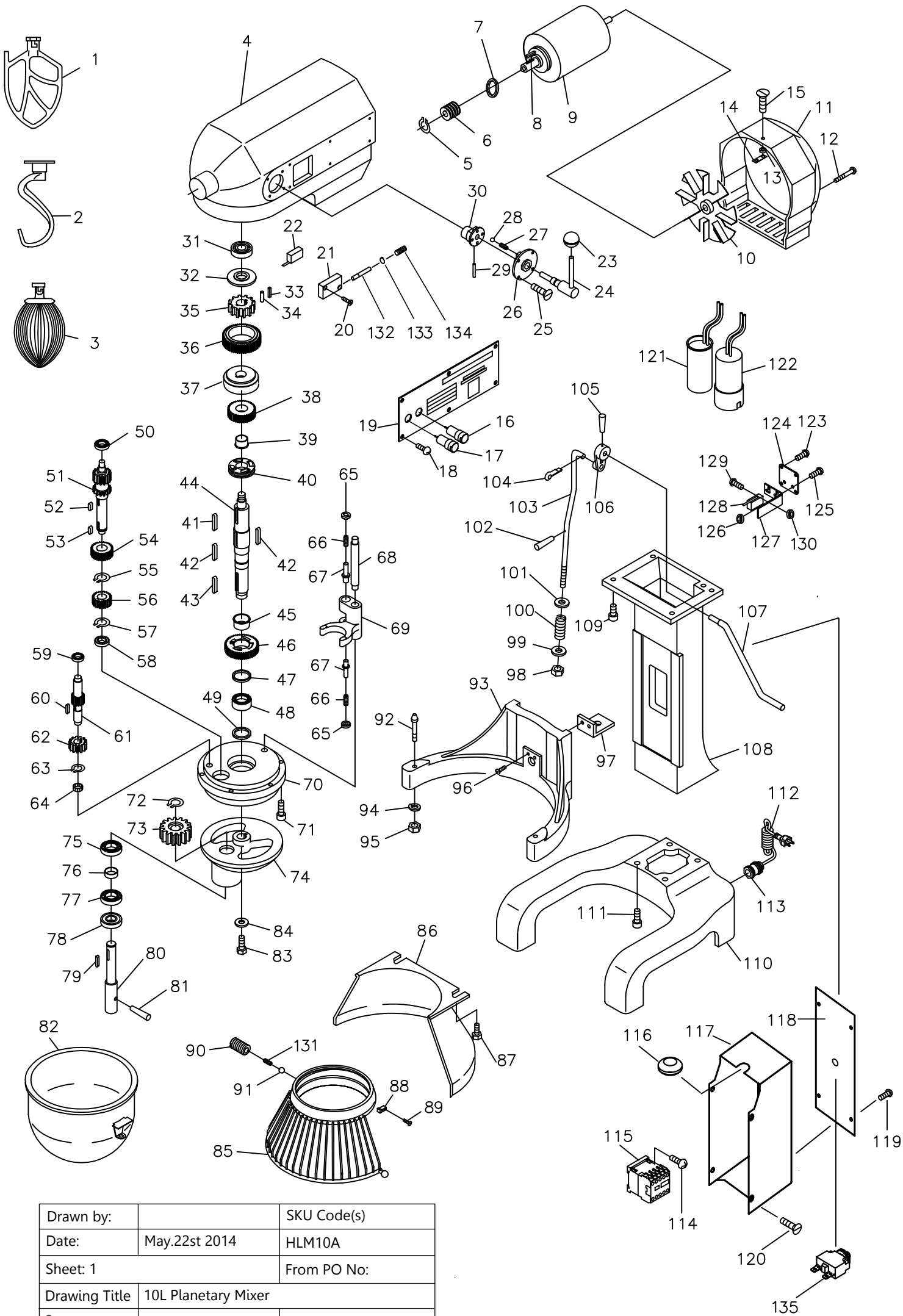


# EXPLOSIONSZEICHNUNG



KBS Gastrotechnik GmbH – Schoßbergstraße 26 – 65201 Wiesbaden



Drawn by:		SKU Code(s)
Date:	May.22st 2014	HLM10A
Sheet: 1		From PO No:
Drawing Title	10L Planetary Mixer	
Status	Final	Revision: Rev.1

Ref. No.	Supplier code	Description	Qty	Description
1	10-1	Flat Beater	1	
2	10-2	Hook	1	
3	10-3	Wire whip	1	
4	10-4	Gear box	1	
5	10-5	Circlips for shaft	1	
6	10-6	Worm pole	1	
7	10-7	Oil seal	1	
8	10-8	Key	1	
9	10-9	Motor	1	
10	10-10	fan	1	
11	10-11	Back cover	1	
12	10-12	Nut:M5X60	2	
13	10-13	Spring washer	1	
14	10-14	Connector	1	
15	10-15	Nut:M4X8	2	
16	10-16	Red button	1	
17	10-17	Green button	1	
18	10-18	Nut:M4X8	6	
19	10-19	Brand	1	
20	10-20	Nut:M4X20	2	
21	10-21	The micro switch installation	1	
22	10-22	Distance switch	1	
23	10-23	Nob	1	
24	10-24	Speed handle	1	
25	10-25	Nut:M4X8	4	
26	10-26	fix seat	1	
27	10-27	Spring	2	
28	10-28	steel ball	2	
29	10-29	Retainer-spring	1	
30	10-30	nob	1	
31	10-31	deep groove ball bearing	1	
32	10-32	Plug	1	
33	10-33	Spring	8	
34	10-34	Roller: 6X10	8	
35	10-35	Gear	1	
36	10-36	Super machine parts	1	
37	10-37	ring gasket	1	
38	10-38	Combination of gear	1	
39	10-39	Gear shaft sleeve	1	
40	10-40	Claw-type clutch	1	
41	10-41	Key : 5X25	1	
42	10-42	Key : 5X30	2	
43	10-43	Key : 5X30	1	
44	10-44	Main shaft	1	
45	10-45	Gear shaft sleeve	1	

46	10-46	Gear	1
47	10-47	Spring washer	1
48	30-36	Bearing	1
49	10-49	Oil seal	1
50	10-50	Bearing	1
51	10-51	Gear shaft	1
52	10-52	Key : 5X10	1
53	10-53	Key : 5X10	1
54	10-54	Combination of gear	1
55	10-55	Circlips for shaft: 55	1
56	10-56	Gear	1
57	10-57	Circlips for shaft	1
58	10-58	Bearing	1
59	10-59	Bearing	1
60	10-60	Key : 5X14	1
61	10-61	Shaft worm gear	1
62	10-62	Worm gear	1
63	10-63	Circlips for shaft	1
64	10-64	Bearing	1
65	30-7	Control nut	2
66	10-66	Spring	2
67	10-67	Fork pin	2
68	10-68	declutch shift shaft	1
69	10-69	Shifting yoke	1
70	10-70	Inner gear	1
71	10-71	hexagon socket cap screws	6
72	10-72	Circlips for shaft	1
73	10-73	Planet gear	1
74	10-74	Operating shelf	1
75	30-76	Bearing	1
76	10-76	Running shaft support	1
77	30-76	Bearing	1
78	10-78	Oil seal	1
79	10-79	Key : 5X20	1
80	10-80	running spindle	1
81	10-81	Retainer-spring	1
82	10-82	Bowl	1
83	10-83	cross recess pan head screw	1
84	10-84	Moving frame clamp	1
85	10-85	front shield	1
86	10-86	back shield	1
87	10-87	hexagonal head bolt	2
88	10-88	Bump pin block	1
89	10-89	cross recessed countersunk head screw	2
90	10-90	Allen flat end set screws	5

the same with 20L and 30L

the same with 20L and 30L

the same with 30L

the same with 30L

91	10-91	steel ball	5
92	10-92	Taper pin column	2
93	10-93	Support	1
94	10-94	Spring washer	2
95	10-95	Type 1 hexagonal nut	2
96	10-96	cross recessed countersunk head screw	2
97	10-97	Support lifting climbing	1
98	10-98	hexagon lock nut	1
99	10-99	flat washer	1
100	10-100	compression spring	1
101	10-101	flat washer	1
102	10-102	elastic cylindrical pin	1
103	10-103	Connecting rod	1
104	10-104	cotter	1
105	10-105	Retainer-spring	1
106	10-106	Crank lever	1
107	10-107	Handle	1
108	10-108	Stud	1
109	10-109	hexagonal head bolt	4
110	10-110	foundation	1
111	10-111	hexagonal head bolt	4
112	10-112	Power cord	1
113	10-113	Power supply is waterproof connectors	1
114	10-114	cross recess pan head screw	4
115	10-115	Contact switch	1
116	10-116	Channeling coil	1
117	10-117	electricity box	1
118	10-118	Electrical box cover plate	1
119	10-119	M4X8 Stainless steel cross trough pan head screws	4
120	10-120	M4X8 cross recessed countersunk head screw	4
121	10-121	Capacitor	1
122	10-122	Capacitor	1
123	10-123	cross recess pan head screw	4
124	10-124	Travel switch fixed plate	1
125	10-125	cross recess pan head screw	2
126	10-126	Type 1 hexagonal nut	2
127	10-127	Travel switch bracket	1
128	10-128	Distance switch	1
129	10-129	cross recess pan head screw	2
130	10-130	Type 1 hexagonal nut	2
131	10-131	Shield compression spring	1
132	10-132	Switch shaft pin	1
133	10-133	split washer	1
134	10-134	Switch shaft pin compression spring	1
135	10-135	Overload switch	1