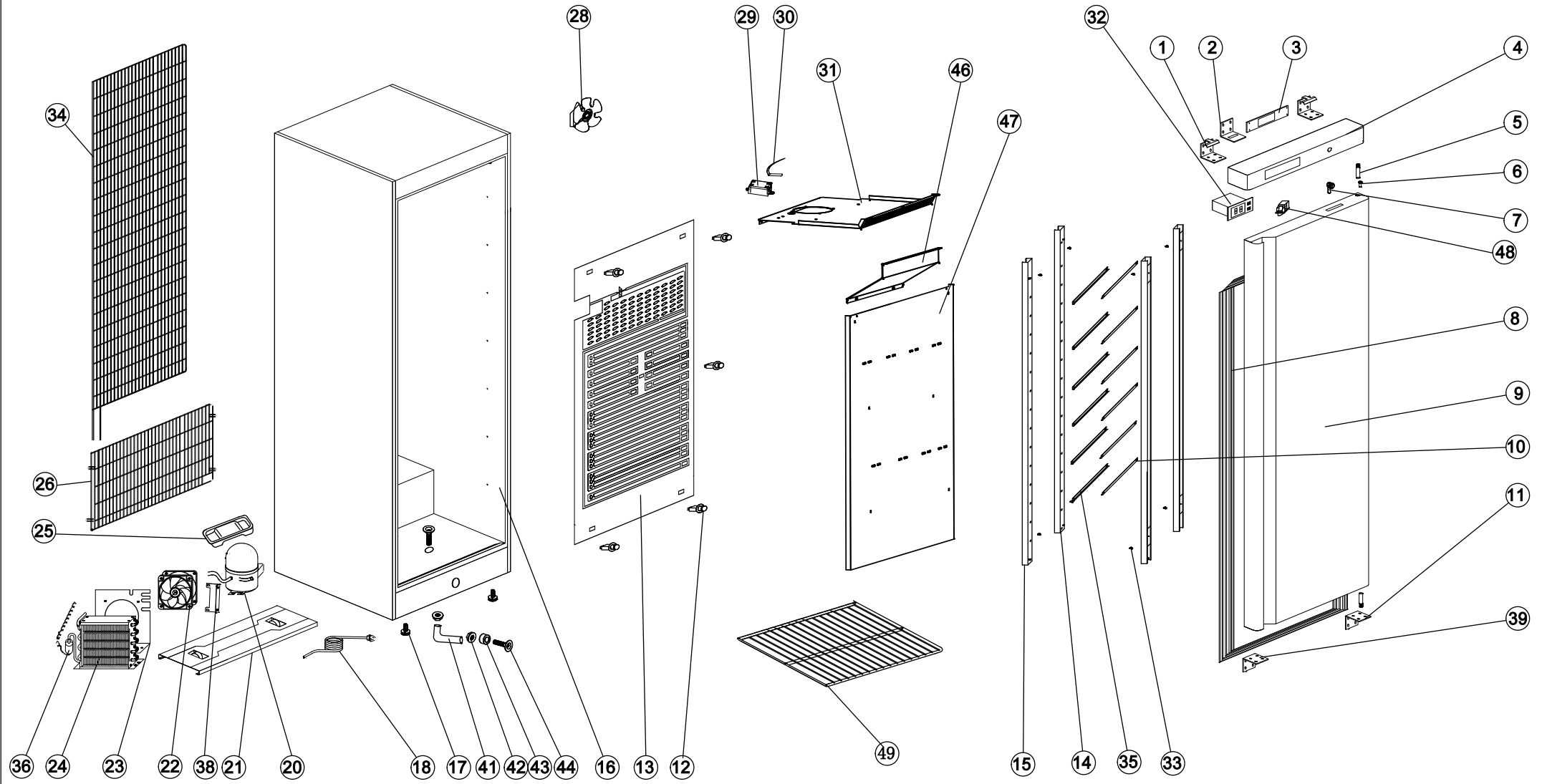


EXPLOSIONSZEICHNUNG



KBS Gastrotechnik GmbH – Schoßbergstraße 26 – 65201 Wiesbaden

EXPLODE OF G-HR500P-A



SPARE PARTS LIST OF G-HR500P-A

NO	NAME	NEW CODE	MODEL	QTY	MATERIAL	REMARK
1	UP HINGE	110110036	HR600	2PCS		
2	HOOK OF LOCK	110110044	HR600	1PC		
3	THERMOSTAT SUPPORT	108130004	HR/HF	1PC		
4	FRONT PANEL	108130013	HR600	1PC		BLACK
5	HINGE AXIS	107110010	HR600	2PCS		
6	BUSHING	108300029		2PCS		
7	LOCK	107130008	HR系列	1PC		
8	GASKET	108270157	HR500	1PC		
9	DOOR	5107000688	HR500	1PC		
10	GUIDE RIGHT	5203000096	448.5×43	6PCS		
11	DOWN HINGE	110110049	HR600	1PC		
12	EVAPORATOR FIXER	108300129	HR系列	5PCS		
13	EVAPORATOR	113040616	G-HR500	1PC		
14	BACK SUPPORT	5203000098	1100×100	2PCS		
15	FRONT SUPPORT	5203000097	1100×100	2PCS		
16	BODY	5102000550	HR500	1PC		
17	FEET	108300183	S900 φ10	2PCS		
18	PLUG	104050031	欧式75-28 JST	1PC		
20	COMPRESSOR	104010354	ETH-80L	1PC		
21	UNITE BOARD	5202001692	773×208	1PC		
	WHEEL	108300144	HR600	2PCS		
	WHEELSPINDLE	107110009	HR600	2PCS		
22	CONDENSER FAN	104030036	1238 220V	1PC		
23	CONDENSER FAN SUPPORT	5202001695	284×220	1PC		
24	CONDENSER	113020067	HR110	1PC		
25	WATER PAN	108300172	HR/HF系列	1PC		
26	UNITE ROOM GRILLS	109040052	HR500	1PC		
28	FAN	104030051	HT200R	1PC		
29	SENSOR FIXED BOX	108110314	白	1PC		

30	SENSOR	104020097	L=1.5M JST	1PC		
30	SENSOR	104020099	尾部 JST	1PC		
31	FAN SUPPORT	5202008177	680×520	1PC		
32	THERMOSTAT	104020086	LTC-20HT	1PC		
33	SUPPORT BOLT	107070007	HR500P	8PCS		
34	CONDENSER	113020094	HR500	1PC		
35	GUIDE LEFT	5203000095	448.5×43	6PCS		
36	FILTER DRIER	107180011	HF进4.9/6.1出2.4	1PC		
38	SENSOR FIXED BOX	5202001651	100×120	1PC		
39	DOWN HINGE /LEFT	108120055	HR系列 (HT08)	1PC		
41	WATER PIPE	114010034	GN60BT L=180	1PC		
42	DRAIN PIPE NUT	108300064	S900	2PCS		
43	DRAIN PIPE BUSHING	108300088	HR500与原S900 图纸相同	1PC		
44	DRAIN PIPE	108300081	S900	2PCS		
46	CIRCLE FAN COVER	5202008176	647×215.7	1PC		
47	AIRFLOW CONDUCT BOARD	5202008178	1055×666	1PC		
48	DOOR SWITCH	104090013	常开 (两爪)	1PC		
49	BOTTOM	109060083	HR500	1PC		