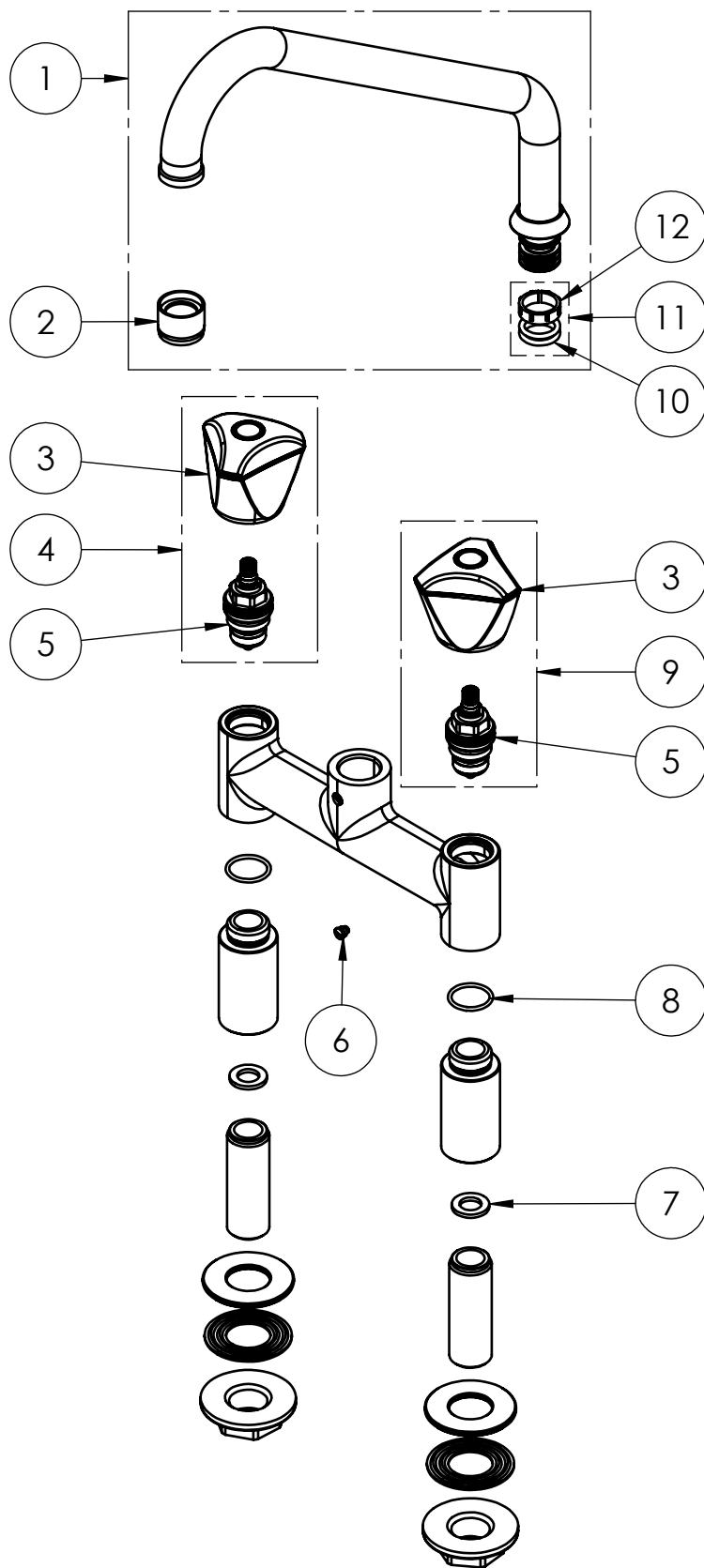


# EXPLOSIONSZEICHNUNG



KBS Gastrotechnik GmbH – Schoßbergstraße 26 – 65201 Wiesbaden

| ITEM NO. | SALES NO. | DESCRIPTION  |
|----------|-----------|--|
| 1        | C005      | SWING NOZZLE Ø20x250x150   |
| 2        | P015      | STREAM REGULATOR (Ø20 SPOUT)   |
| 3        | H033      | "3Pe" HANDLE W. COLOR CODED INDEX (specify the color B or R)   |
| 4        | V0S3/R    | COMPLETE HANDLE WITH RED CODED INDEX + HEADWORK KIT  |
| 5        | VS0       | G1/2" COMPRESSION HEADWORK   |
| 6        | P236      | SPOUT SCREW (short)  |
| 7        | P074      | FLAT GASKET 1/2" Ø18,5x11 sp.2mm   |
| 8        | P216      | O-RING 2075 (Ø18,77x1,78), EP70P.A PEROX cert.DVGW (rompig. New/F)                                     |
| 9        | V0S3/B    | COMPLETE HANDLE WITH BLUE CODED INDEX + HEADWORK KIT   |
| 10       | P072      | O-RING 119 EP70P.A (Ø15.08 x 2.62) PEROX (Colonnine+2 x Canna) ** cert. DVGW e WRAS** **anche x Reel** |
| 11       | P613      | #2OR+#1 SWIVEL SLEEVE KIT FOR FAUCET/OUTLET  |
| 12       | P592      | SWIVEL SLEEVE  |



**PRODUCT COMPLIANCE:**

ROHS 2011/65/UE;  
REACH 1907/2006;  
DVGW Hygiene

| TITLE / DESCRIZIONE   | DRN / DIS  | CHD / VER            | APPR                           |
|---|--|----------------------|--------------------------------|
| Chrome plated brass double hole (155mm center distance). Deck mount mixing faucet with 250mm swivel nozzle (Ø20mm); G1/2" compression headworks; 50mm-long mounting shanks; 50mm risers; G1/2" male inlets. | E.Artini   |                      |                                |
|   | SCALE / SCALA 1:3.5  | DATE / DATA 28/11/22 | SHEET / PAG 2 of 2             |
| This drawing contains proprietary information which is the property of KLARCO S.R.L. without whose written permission it may not be copied, shown or handed to a third party or otherwise used              | Questo disegno contiene informazioni di proprietà di KLARCO S.R.L. e senza la sua autorizzazione scritta non può essere copiato, mostrato o ceduto a terzi o in qualsiasi altro modo usato | NUMBER / CODICE DIS. | MODEL / PRODOTTO 1S.3101.05.S3 |