



# T&S BRASS AND BRONZE WORKS, INC.

2 Saddleback Cove / P.O. Box 1088  
Travelers Rest, SC 29690

Model No.

**EU-3100-VF05**

Item No.

Travelers Rest, SC: 800-476-4103 • Simi Valley, CA: 800-423-0150 • Fax: 864-834-3518 • www.tsbrass.com

This Space for Architect/Engineer Approval

Job Name \_\_\_\_\_ Date \_\_\_\_\_

Model Specified \_\_\_\_\_ Quantity \_\_\_\_\_

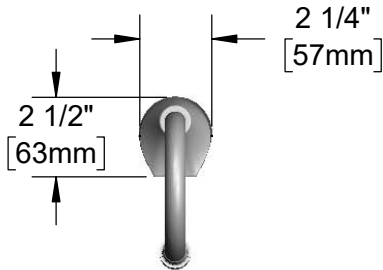
Customer/Wholesaler \_\_\_\_\_

Contractor \_\_\_\_\_

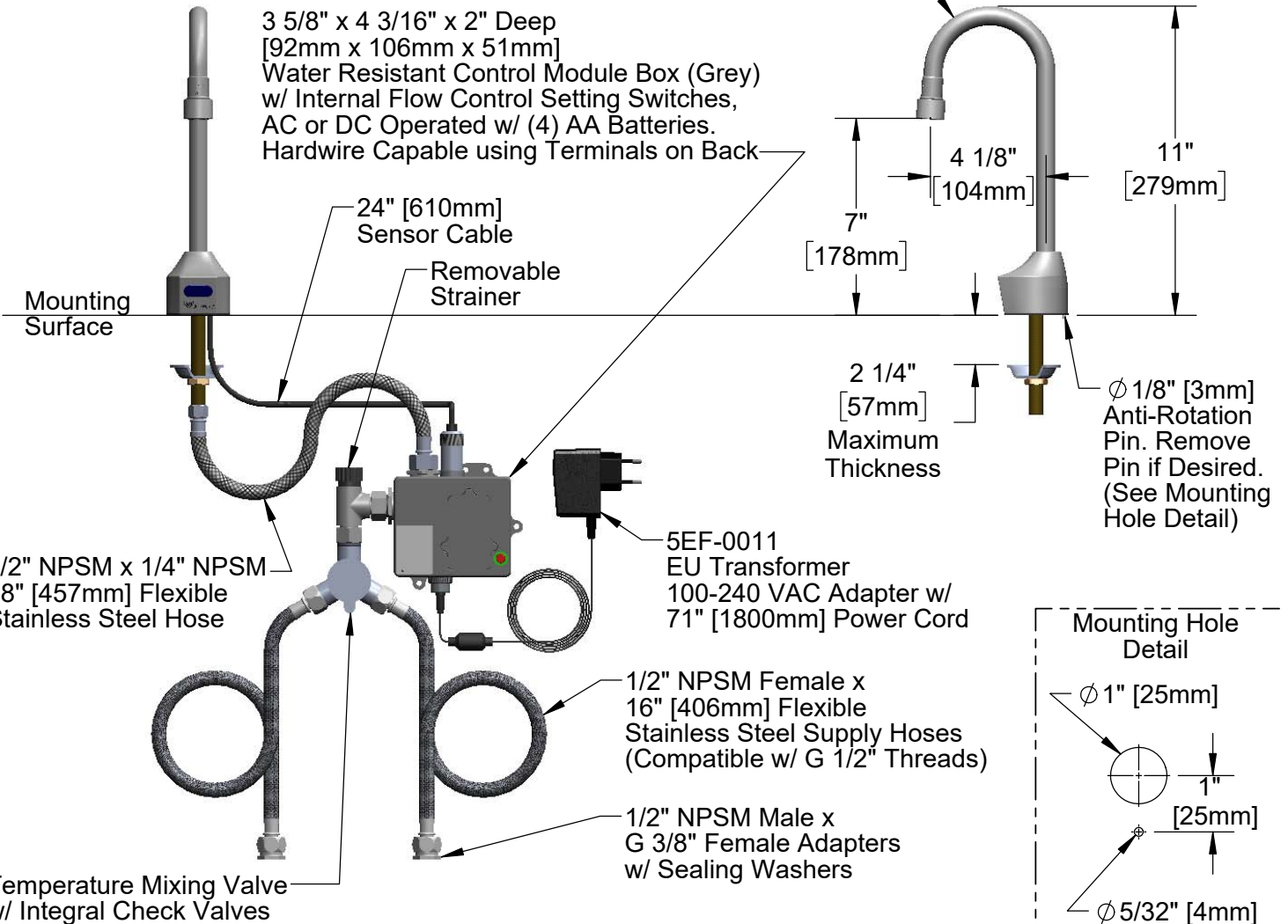
Architect/Engineer \_\_\_\_\_



**ADA Compliant**



Rigid Gooseneck w/  
B-0199-06-F05  
0.5 GPM [1.9 L/min]  
Vandal Resistant  
Non-Aerated Spray Device



**Product Specifications:**

Chrome Plated Brass Electronic Faucet: Deck Mount Rigid Gooseneck w/ 0.5 GPM VR Non-Aerated Spray Device, AC/DC Control Module with Internal Flow Control Setting Switches, EU Transformer, Temperature Mixing Valve w/ Integral Check Valves, Flexible Supply Hoses and G 3/8" Female Inlet Adapters

**Product Compliance:**

ASME A112.18.1 / CSA B125.1  
NSF 61 - Section 9  
NSF 372 (Low Lead Content)  
ANSI A117.1 (ADA)  
UL 1951



# T&S BRASS AND BRONZE WORKS, INC.

2 Saddleback Cove / P.O. Box 1088  
Travelers Rest, SC 29690

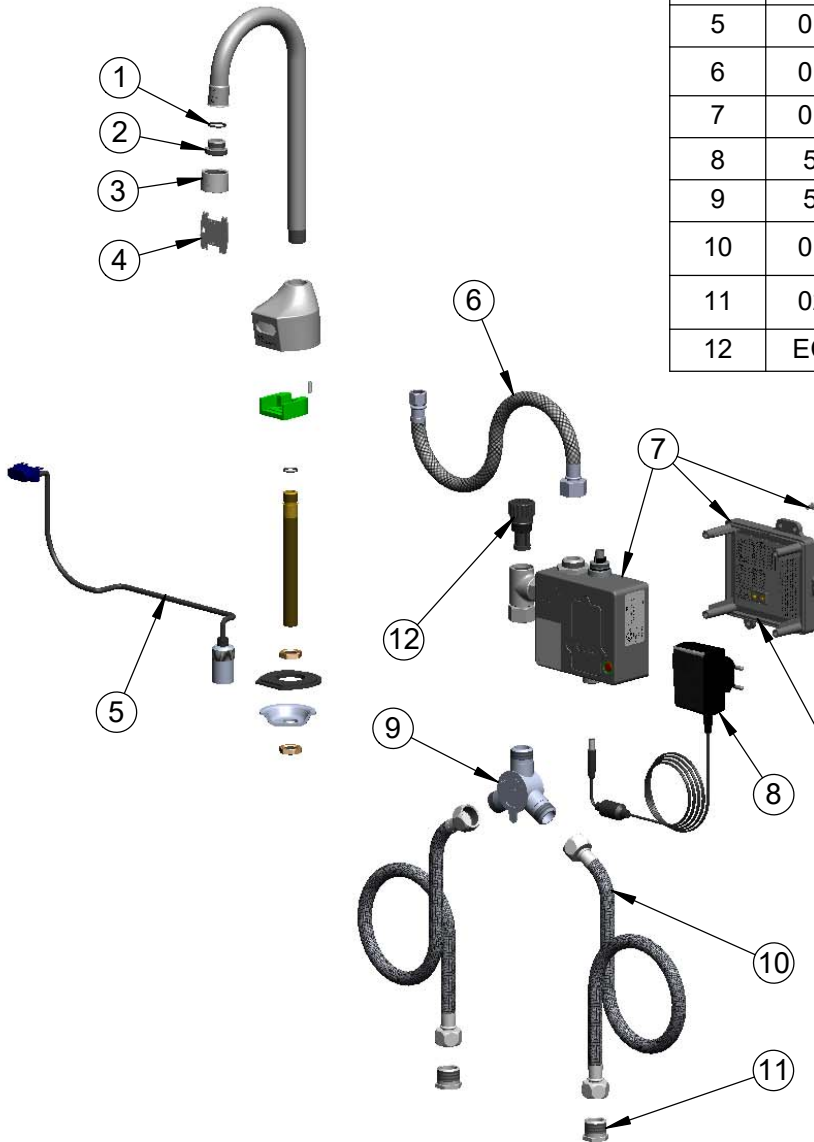
Model No.

**EU-3100-VF05**

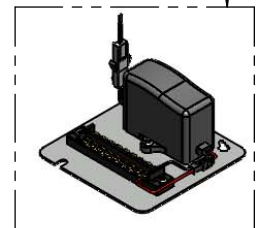
Item No.

Travelers Rest, SC: 800-476-4103 • Simi Valley, CA: 800-423-0150 • Fax: 864-834-3518 • www.tsbrass.com

ITEM NO.	SALES NO.	DESCRIPTION
1	006575-45	-015 O-Ring
2	044A	3/8" to Aerator Adapter
3	B-0199-06-N05	VR 0.5 GPM Non-Aerated Spray Device, 55/64-27 UN Female w/ Key
4	015425-45	Vandal Resistant Key
5	017195-45	Angled Sensor w/ Cable
6	016297-45	Inlet Hose, Faucet, 1/2" NPSM Female x 1/4" NPSM Female
7	016647-45	ChekPoint Module (Grey)
8	5EF-0011	A/C Transformer (EU)
9	5EF-0006	Mechanical Mixing Valve
10	016167-45	Supply Hose, 1/2" NPSM Female x 1/2" NPSM Female
11	020498-25	Hex Bushing, G 3/8" Female x 1/2 NPSM Male w/ Sealing Washer
12	EC-FILTER	Replacement Filter



A Maximum of (8) ChekPoint Faucets can be Hardwire Connected and Powered by EC-HARDWIRE ChekPoint Hardwire AC Transformer. (Sold Separately)



Label for Flow Control Switch Settings is Located on Inside of Back Cover.

Flow Control Switches are Located Inside Module Housing in Grey Box Next to Battery Compartment.  
\*Switches are Set to DEFAULT Position:  
- Auto Time Out = 10 Seconds  
- Shut Off Delay = 1 Second  
- Auto Flush = OFF

\*Available Water Flow Control Selections:  
(6) Auto Time Out: 10 sec, 25 sec, 45 sec, 60 sec, 3 min, 20 min  
(4) Shut Off Delay: 1 sec, 2 sec, 4 sec, 10 sec  
Auto Flush (30 Seconds After Every 12 Inactive Hours): ON or OFF

Remove (4) Screws and Back Cover to Access Switches.

**Product Specifications:**

Chrome Plated Brass Electronic Faucet: Deck Mount Rigid Gooseneck w/ 0.5 GPM VR Non-Aerated Spray Device, AC/DC Control Module with Internal Flow Control Setting Switches, EU Transformer, Temperature Control Mixing Valve w/ Integral Check Valves, Flexible Supply Hoses and G 3/8" Female Inlet Adapters

**Product Compliance:**

ASME A112.18.1 / CSA B125.1  
NSF 61 - Section 9  
NSF 372 (Low Lead Content)  
ANSI A117.1 (ADA)  
UL 1951