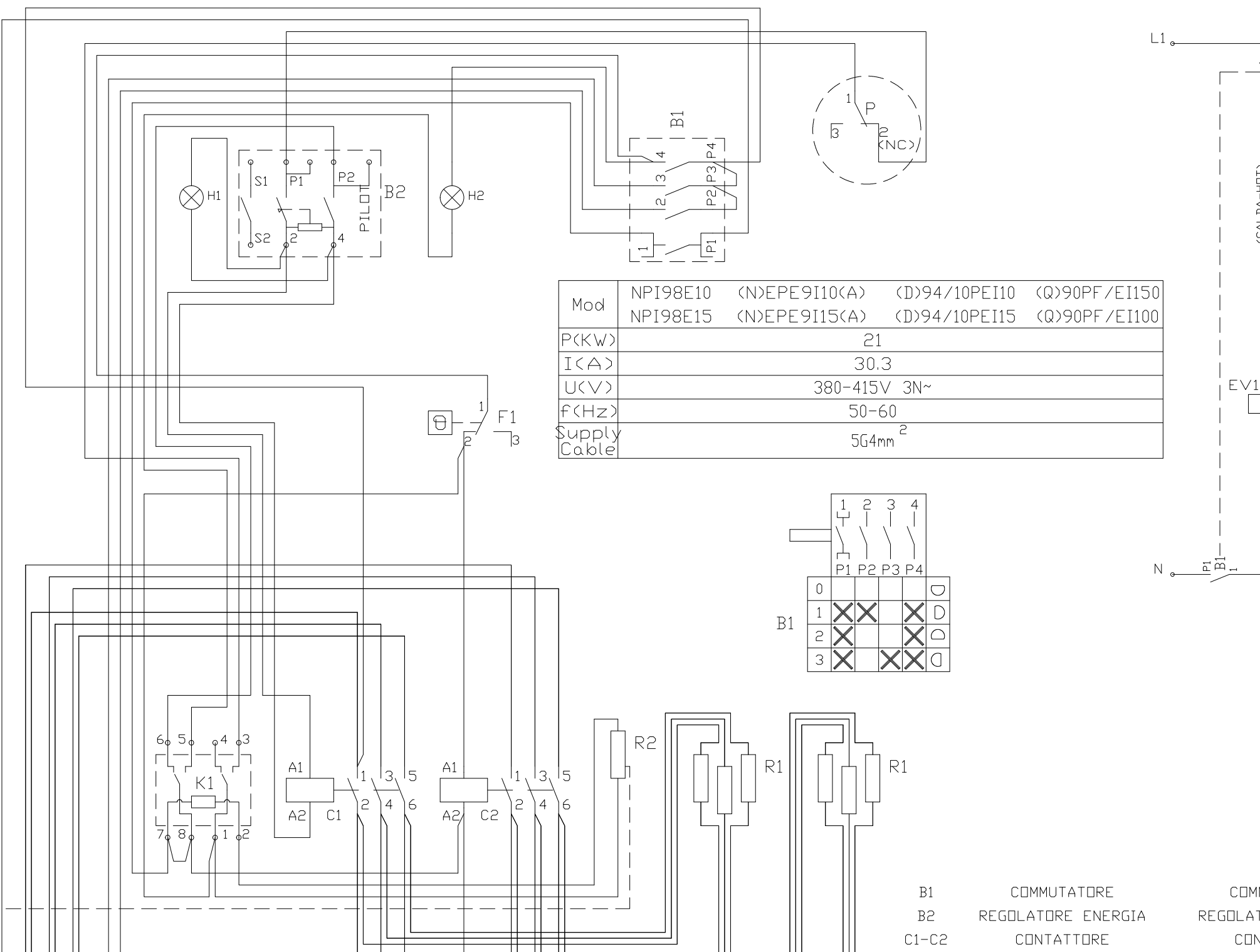


# SCHALTPLAN

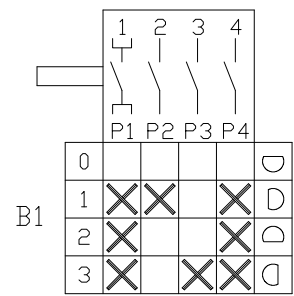


KBS Gastrotechnik GmbH – Schoßbergstraße 26 – 65201 Wiesbaden

CRUSCOTTO



Mod	NPI98E10	(N)EPE9I10(A)	(D)94/10PEI10	(Q)90PF/EI150
	NPI98E15	(N)EPE9I15(A)	(D)94/10PEI15	(Q)90PF/EI100
P(KW)	21			
I(A)	30.3			
U(V)	380-415V 3N~			
f(Hz)	50-60			
Supply Cable	5G4mm <sup>2</sup>			



B1      COMMUTATORE  
 B2      REGOLATORE ENERGIA  
 C1-C2    CONTATTORE  
 COMM  
 REGULATI  
 CON