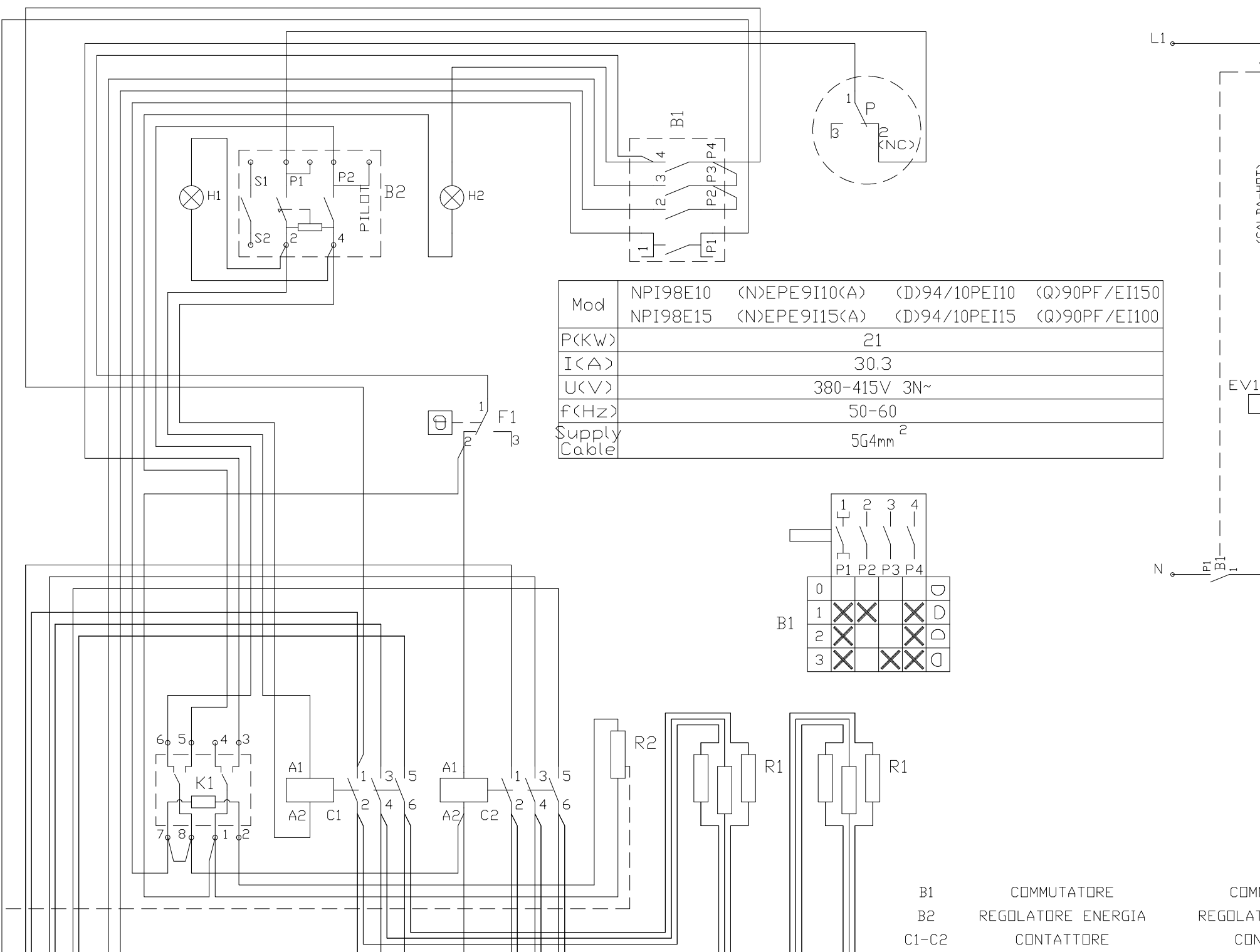


SCHALTPLAN

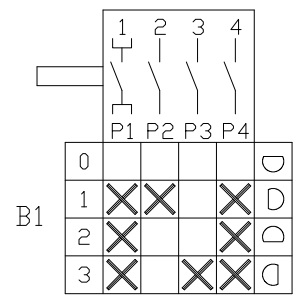


KBS Gastrotechnik GmbH – Schoßbergstraße 26 – 65201 Wiesbaden

CRUSCOTTO



Mod	NPI98E10	(N)EPE9I10(A)	(D)94/10PEI10	(Q)90PF/EI150
	NPI98E15	(N)EPE9I15(A)	(D)94/10PEI15	(Q)90PF/EI100
P(KW)	21			
I(A)	30.3			
U(V)	380-415V 3N~			
f(Hz)	50-60			
Supply Cable	5G4mm ²			



B1 COMMUTATORE
 B2 REGOLATORE ENERGIA
 C1-C2 CONTATTORE
 COMM
 REGULATI
 CON